

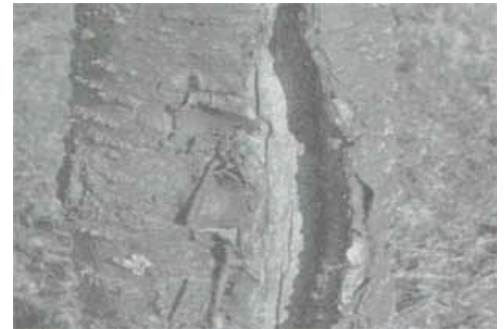
Bark Splitting on Trees

Bark splitting can occur in response to various environmental factors at different times of the year. Splits can occur on the trunk of the tree as well as on branches. Trees that are most susceptible to this type of injury are those that are thin-barked, such as certain fruit trees. Newly-planted-trees or young trees are more prone to bark-splitting. Bark splits are not likely to be fatal to trees, although they will, in some cases, allow entry of disease organisms that can cause decay. Through proper treatment to encourage the natural callusing process, a tree should be able to close most splits.

There is no single reason for bark splitting on trees. During late winter and early spring, severe cold followed by rapid thawing can result in splits referred to as “frost-cracks.” These “frost” cracks can actually start from a wound inflicted earlier in the tree’s development. Sometimes the crack may remain in the internal wood, but frosts can cause the crack to expand and split the bark. Excessively late growth in the fall stimulated by warm temperatures, high humidity, and high nitrogen levels can increase susceptibility of trees to frost cracking.

Fluctuating growth conditions may also cause splitting of bark. Dry weather (which slows growth) followed by wet or ideal growth conditions may cause an excessive or vigorous amount of growth leading to splits in the bark.

Sunscauld, especially in winter months, can cause bark injury to thin-barked or young trees. Although an exact split may not be seen immediately, the outer layer of bark will peel away from the affected area in the summer following the winter damage. Sunscald injuries to tree limbs can be minimized by avoiding heavy pruning of trees that have dense canopies. Gradual thinning of limbs over a period of years is preferable, particularly on thin-barked trees. Newly planted trees may be protected from sunscald by wrapping main trunks with tree wrap. As mentioned before, certain trees are more susceptible to splits than others. The trees on which we receive the most inquiries concerning splits are Kwanzan cherry, maple, and fruit trees. Any newly-planted tree, especially of a thin-barked species, is a candidate for bark splitting if it is not cared for properly. Be particularly careful to avoid fertilizing trees late in the growing season, as this may promote new growth and predispose the tissue to winter injuries (including bark splitting). Autumn fertilization following leaf drop and dormancy should not lead to this problem.



Bark split on Kwanzan cherry



Bark tracing to remove split

When a split occurs on a tree, what should you do? In recent years, quite a bit of research has been done on closure of tree wounds. These investigations have indicated that tree wound paints are of little value in helping a tree to callus over. For this reason, do not paint or try to seal a split with paint or tar. Tracing the bark around the split can be very helpful in aiding wound healing. With a sharp knife, starting from one end of the split, trace around one side of the wound, about 1/2 -1 inch back from the split bark. Stop at the other end and do the same procedure on the opposite side of the split. Knives should be sterilized between cuts by dipping for several minutes in a 1:10, bleach:water solution or a 70% alcohol

solution to avoid contaminating the cuts. Carefully remove the bark from inside the traced area. Remember to leave this untreated. A tree growing with good vigor usually calluses over quicker. Encourage vigor in the tree with yearly spring fertilizer applications--and be sure to provide adequate irrigation in hot, dry weather. Bark splits will often close over completely leaving a slight ridge in the trunk where callus tissue has been produced.

Prepared by: Thomas Kowalsick, Horticulture Consultant, Suffolk County Cooperative Extension

Juliet E. Carroll, Extension Associate, Department of Plant Pathology

Margery L. Daughtrey, Extension Associate, L.I. Horticultural Research Laboratory

12/82

6/03 - Slightly Revised

Photos courtesy of: <http://plantclinic.cornell.edu/FactSheets/barksplitting/barksplit.htm>