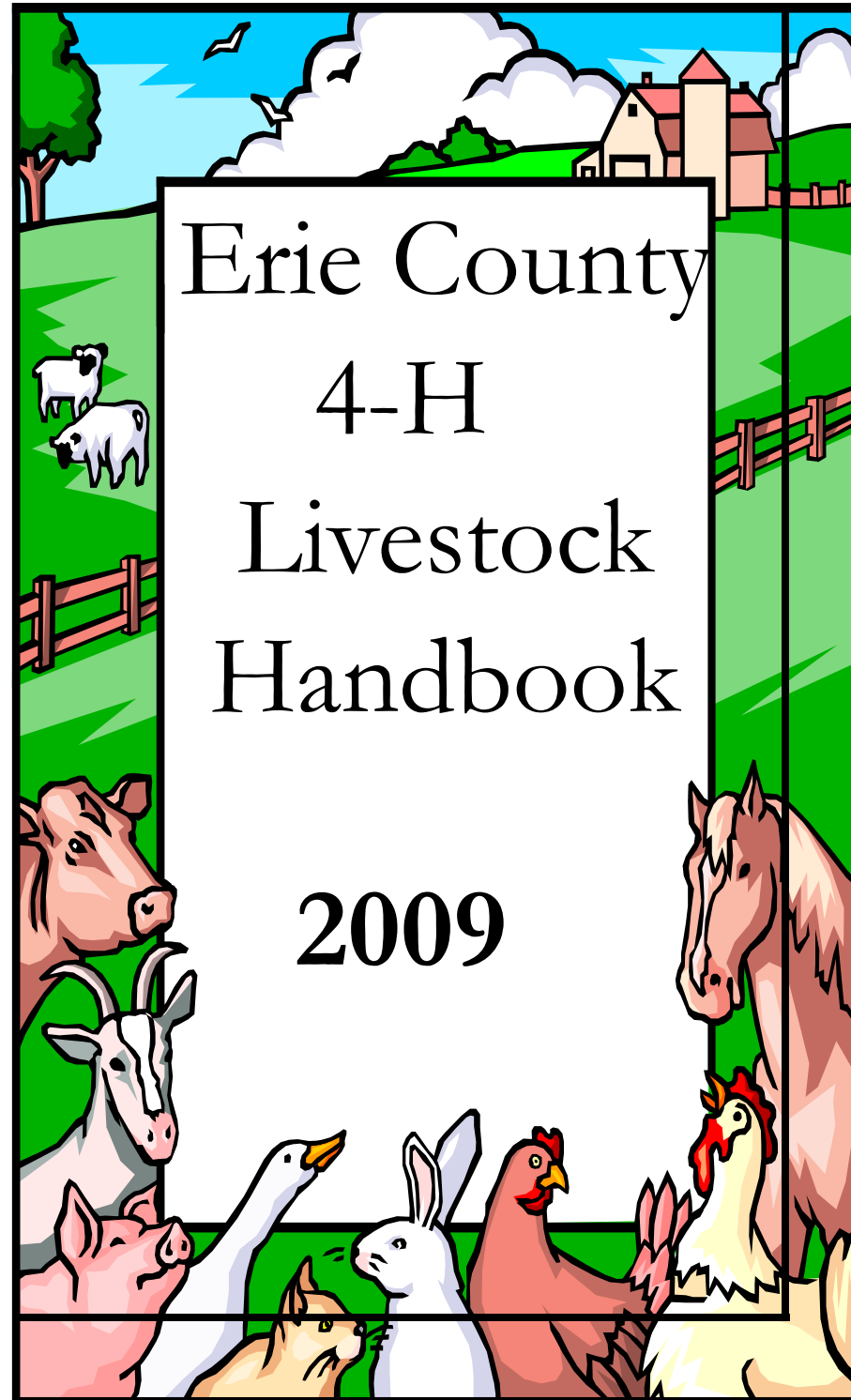


## Other Important Rabbit Information

1. **Rabbit Knowledge Contest** – Participants will be evaluated on their knowledge of rabbits. Contest will consist of a written test, identification of equipment used in raising rabbits, feeds, and judging of a live rabbit.
2. **Rabbit Information Poster** – A 22” x 28” poster illustrating any phase of the 4-H Rabbit Project (i.e. Breeds, Health, Diseases, Nutrition, Parts of the Body, Housing, Fur Types, etc.)
3. **Rabbit Dressing Contest** – Contestants should dress their rabbit in a costume that is non-harmful to the rabbit. Contestants are encouraged to dress in accordance with the rabbit’s costume. There will be two age groups.
4. **All exhibitors** are requested to help a minimum of one two-hour period at the 4-H Rabbit Exhibit during the Fair
5. **Rabbit Public Presentations** – sign-up for specific dates and times when your rabbits are at the fair. Presentations must be done 3 times any day of the Fair.

If you are interested in exhibiting your rabbit at the New York State Fair, please call Tammi Kron at 652-5400, ext. 132 for details.



This **Livestock Handbook** has been created for your convenience. It contains all of the rules for the 2009 Market Animal Program and Livestock Program. This book allows you to know what is expected of you during the project year and at the Fair. Program advisors felt that there are rules not mentioned in the **America's Fair Entry Information** found on line at [www.americas-fair.org](http://www.americas-fair.org) that you will need to know before you start the project year. This book *does not* replace the **America's Fair Entry Information**, found on line at [www.americas-fair.org](http://www.americas-fair.org). All information found in the America's Fair Entry Information applies. DO NOT lose your handbook; you will need to refer to it at a later time. If you have any questions about your project please ASK! You may call the 4-H office at 716-652-5400.

### Remember:

To be eligible to show a livestock animal at America's Fair you **MUST** be an enrolled member of Erie County 4-H and be between the ages of 8 and 19. For more clarifications, see below.

**All Market Animal Projects:** The member **MUST** be 9 on or before December 31, 2008 (if your birthday is January 1, 2009 you must wait until 2010 to show a market animal at the fair). The member **MUST NOT** have passed their 19<sup>th</sup> birthday on or before January 1, 2009 (if your 19<sup>th</sup> birthday is January 1, 2009 you can *still* be a member of 4-H).

**All Non-Market Animal Projects:** The member **MUST** be 8 on or before December 31, 2008 (if your birthday is January 1, 2009 you must wait until 2010 to show a non-market animal at the fair). The member **MUST NOT** have passed their 19<sup>th</sup> birthday on or before January 1, 2009 (if your 19<sup>th</sup> birthday is January 1, 2009 you can *still* be a member of 4-H).

### Livestock Program Start Dates:

January 1, 2009 —Beef, Dairy Goats, Dairy Cows, Horse  
May 1, 2009—Sheep, Swine, Poultry, Rabbits, Meat Goats

Fair 4-H Market Poultry Auction and must be removed from the fairgrounds immediately.

1. Feed and medication guidelines must be strictly followed for antibiotic withholding periods.
2. All animals must meet the health Requirements of the New York State Department of Agriculture and Markets.
3. The same two birds will be weighed, judged and sold as one entry.

**\*\*Failure to abide by the above rules will result in the loss of privileges (such as selling your market poultry entry) as decided by the 4-H Personnel, Show Coordinator, and the Erie County Fair Personnel.\*\***



### Rabbits

1. The exhibitor must own all rabbits. Family owned rabbits are ineligible. Rabbits do not need to have registration or health papers. All rabbits must have a permanent ear marks (a tattoo) in the left ear.
2. All rabbits must have been born by May 1, 2009.
3. Committee in charge reserves the right to refuse to accept for exhibit any rabbit which show evidence of parasites, or diseases including, but not limited to: Snuffles, tumor, hernia, abscesses, runny eyes and/or nose, mange and colds. Rabbits brought to the Fair dirty and/or with long toenails will not be accepted.
4. 4-H members must be 8 years old as of January 1, 2008 to show Rabbits.
5. Erie County Fair Entry form for Rabbits must be submitted to the 4-H Office by July 13, 2009

**Shanks and Toes:**

Stubs, feathers or down on shanks, feet or toes of clean shanked birds

Leg or toes color foreign to the breed

Web foot

**Color:**

Red or yellow feathers in any black variety

Brown or buff in quills of primaries or secondary of white varieties except slight gray ticking

**2009 Market Poultry Program Rules**

The following rules will apply to the Market Poultry Program. Any individual wishing to participate in the 4-H Market Poultry Program and auction at the Erie County Fair must fulfill all of the following requirements:

1. Attendance of a market poultry program meeting. The date, time and location will be announced in the **4-H News**.
2. There is a limit of one entry per exhibitor. All exhibitors must be 9 as of January 1, 2009 to be eligible to participate.
3. An entry consists of either 2 broilers (8-12 weeks of age) or 2 roasters (12-20 weeks of age).
4. Birds may be either purebred or crossbred stock.
5. All market meat birds **MUST** be purchased through the Erie County 4-H Program
6. All eligible entries must be sold at the Erie County Fair. A 5% commission will be withheld from the exhibitor’s check to defray sale and trucking expenses.
7. All entries will be weighed a the fair as a pen of two birds. Combined weight of both birds will be the entry auction weight. All entries will be weighed one time only. Only one entry per exhibitor will be weighed. No substitutes will be allowed.
8. All market poultry classes will be judged on health, vigor, and market quality at the time of show. The Danish system will be used. Entries judged “No Award” will not be eligible for the Erie County

**Table of Content**

Market Animal Project Champion Program Rules .....5  
 New York State Fair Rules .....7  
 Market Animal Show Rules .....8  
 General Information.....10

**BEEF CATTLE**

Specific Rules for Market Steer Exhibitors.....11  
 Specific Rules for Beef Breeding Exhibitors .....12  
 Checklist of Mandatory Procedures .....13

**SHEEP**

Specific Rules for Market Lamb Exhibitors .....14  
 Specific Rules for Breeding Sheep Exhibitors.....14  
 Leasing Program Rules .....15  
 Checklist of Mandatory Procedures .....15

**SWINE**

Specific Rules for Market Swine Exhibitors .....16  
 Checklist of Mandatory Procedures .....17

**DAIRY CATTLE**

Specific Rules for Dairy Cattle Exhibitors.....18  
 Leasing Program Rules .....18  
 Checklist of Mandatory Procedures .....20  
 Dairy Project Champion Rules.....21

**GOATS**

Specific Rules for Goat Exhibitors.....23  
 Goat Project Champion Rules .....24  
 Leasing Program Rules .....26  
 Checklist of Mandatory Procedures .....27

**POULTRY**

Specific Rules for Poultry Exhibitors .....28  
 General Poultry Disqualifications ..... 29  
 Market Poultry Program Rules..... 30

**RABBITS**

Specific Rules for Rabbit Exhibitors ..... 31

## *2009 Market Sale Dates*

*Sunday, August 16, 2009*

*1:00 p.m.*

*Meat Goats*

*Market Swine*

*Saturday, August 22, 2009*

*1:00 p.m.*

*Market Poultry*

*Market Lambs*

*Market Steers*

*(Note: Lambs and Steers are not released until 7:00 p.m. on Sunday, you are responsible for maintaining your exhibit!)*

If you are interested in exhibiting your poultry at the New York State Fair, please call Tammi Kron at 652-5400, ext. 132 for details.

### **General Poultry Disqualification's**

- Birds having any of the following deformities or defects shall be disqualified:
- Animals are to be clean. The committee in charge will not accept dirty birds.

#### **General Deformities:**

Crooked back

Deformed beak

A wing showing clipped flights or secondary

Slipped wing

Split wing

Twisted wing or tail feathers

Entire absence of main tail feathers

Decidedly wry tail (crooked)

Decidedly squirrel tails (perpendicular with the back)

#### **Combs:**

Lopped combs on single-comb varieties except Mediterranean females

Rose combs falling to one side or so large as to obstruct sight

Split combs

Comb foreign to breed

Absence of spike on rose comb

#### **Heads:**

Positive enamel white in face of Mediterranean cockerels and pullets

Positive enamel white in the ear lobe of males or females of American breeds

## **Poultry**

### **Poultry Exhibitor Rules**

1. All birds, except meat and crossbred for production classes, must be a purebred standard variety and owned by the exhibitor
2. All birds must have hatched by April 1, 2009 except meat classes.
3. Exhibitors are limited to a total of 5 entries in each class.
4. All poultry except waterfowl shown at State or County fairs shall have originated from U.S. pullorum clean flocks or have a negative pullorum-typhoid test within 90 days of the fair.
5. 4-H members must be 8 years old as of January 1, 2009 to show Poultry.
6. Erie County Fair Entry form for Poultry must be submitted to the 4-H Office by Monday, July 13, 2009.

### **Other Important Poultry Information**

1. **Poultry Showmanship Contest** – Participants will be judged on their knowledge of poultry breed variety, anatomy and handling of the live birds. There will be three divisions, divided according to showing experience.
2. **Poultry Knowledge Contest** – Participants will be evaluated on their knowledge of poultry. Contest will consist of a written test, identification of equipment used in raising poultry, feeds, and judging of live birds.
3. **Rooster Crowing Contest** – The rooster with the most crows in a certain time period to be determined is the winner.
4. **Poultry or Pheasant Information Poster** – A 22" x 28" poster illustrating any phase of the 4-H Poultry/4-H Pheasant Project, (i.e. Breeds, Health Diseases, Nutrition, Parts of the Body, Housing, Feather types and lacing, etc.)
5. **Poultry Judging Contest** – Participants will judge a class of five birds, all of the same breed, and place them in order.
6. **Poultry Dressing Contest** – Contestants should dress their bird in a costume that is non-harmful to the bird. Contestants are encouraged to dress in accordance with the bird's costume. There will be two age groups.
7. All exhibitors are requested to help a minimum of one two-hour period at the 4-H Poultry Exhibit during the Fair.

## **2009 Erie County 4-H**

### **Market Animal Project Champion Program Rules**

The following rules will apply to all four species of market animals (Beef, Sheep, Swine and Meat Goats). Any individual wishing to participate in the 2009 Jr. Department Market Animal Show's must fulfill all of the following requirements:

1. All Market Animal participants must be 9 years old as of January 1, 2009.
2. Monthly project records must be kept for each month of the project. Record forms are available at the 4-H Office. The records must be submitted to the 4-H office within 5 working days from the end of the month for which the record is kept. For example, May's records must be to the 4-H office by June 5<sup>th</sup>. Each record will be judged on its completeness and will receive 100 points if deemed complete and received on time.

#### **Total Possible Points for the Record Portion of the Project:**

**Beef – 400; Sheep – 300; Swine – 300; Meat Goat—300**

1. Attendance at 2 meetings is required. One meeting must be species specific. The other meeting can be species specific or generic (designed to include all species). The type of meeting, the date, time, and location will be announced in the **4-H News**. Exhibitors will receive 150 points for each mandatory meeting attended and 50 points for each meeting attended in excess of the 2 required meetings.
3. All exhibitors must participate in the showmanship contest for the species that they are raising.

#### **Total Possible Points for the Showmanship Portion of the Project:**

**Beef – 300 points; Sheep, Swine, Meat Goat – 300 points**

(300 points for blue ribbons, 200 points for reds, and 100 points for whites)

\*The maximum points for each ribbon category will be reduced by 5 points per placing within the category. For example, if the exhibitor was placed 3<sup>rd</sup> in his showmanship class, and received a blue ribbon, he would receive 290 points towards the project championship. \*Individuals who were previously designated a Master Showman will be considered to have earned a blue ribbon and will be awarded 300 points for their participation in the Master Showmanship Class).

4. The written knowledge test will be incorporated into your feed records. Participation is mandatory. Failure to participate will result in your animal not being accepted to show. Meaning that you will not be able to weigh in an animal at the fair. All knowledge tests will be graded on a monthly basis, the test is worth 100 points.

**Total Possible Points for the Knowledge Test Portion of the Project:**

**Beef , Sheep, Swine, Meat Goat – 100**

5. All exhibitors must show their animal in their respective market class. The points will be awarded as follows: 100 points for 1<sup>st</sup> blue, 95 points for 2<sup>nd</sup> blue, and all other blues in the class will be awarded 90 points; all red ribbons will be awarded 75 points and all white ribbons will be awarded 50 points.

**Total Possible Points for the Market Class Portion of the Project:**

**Beef , Sheep, Swine, Meat Goat – 100**

6. For Sheep Exhibitors ONLY – Points will be awarded for exhibitor participation in the Leadline Contest

**Total Possible Points for the Leadline Portion of the Project:**

**Sheep – 100**

(100 points for a blue ribbon, 75 points for reds and 50 points for whites)

7. **Beef, Sheep, Swine and Meat Goat Exhibitors.** Points will be awarded as follows for presentations that will be given in the spring at the county level.

**Blue – 100; Red – 80; White 60**

Each member **MUST** do a public presentation. Public Presentations may be on any topic. Please remember that there can be **no live animal** presentations given.

Exhibitors that do not give a Public Presentation prior to August 1, 2009 will be ineligible to participate in the 2009 Erie County 4-H Livestock program. There will be no presentations given at the fair in 2009.

4. **Driving/Cart Class** – A class where your goat pulls a cart. There are three levels. The first level is Leadline. At this level you will lead your goat with a leadline and give voice commands. The second level is Cart and Leadline. At this level exhibitors are expected to have their goats pull a cart while on a lead and respond to commands. The third level is Driving Cart. At this level you will be riding in the cart and your goat will listen to your commands.
5. **Timed Obstacle Course** – A fun and challenging timed course for you and your companion goat.

**Mandatory Procedures Checklist  
for Goat Exhibitors**

- Submit a Livestock Registration Card – Due February 1, 2009 (New members have until May 1, 2009)
- Attend at least 2 Erie County 4-H Goat meetings
- Erie County Fair Entry form for Goats must be submitted to the 4-H Office by Monday, July 13, 2009
- Complete a Public Presentation—in the Spring
- Show in Goat Showmanship – at the Fair
- Show your goat in it's respective class – at the Fair
- HAVE FUN!!!**

## Goat Leasing Program Rules

1. An exhibitor may lease up to 2 animals provided that they do not already own a goat.

*Year 1 of the Leasing Program:* A 4-H member may lease only 1 animal. This animal must be under 24 months of age as of the show day at the Erie County Fair, and may not have freshened.

*Year 2 of the Leasing Program:* A 4-H member may lease 1 or 2 animals, one being from the year before and the second being under 24 months of age as of the show day at the Erie County Fair and may not have freshened.

*Year 3 of the Leasing Program:* A 4-H member may lease up to 2 animals that may both be in milk provided that the goat has been in the leasing program.

\*\*You must be an active member in the lease program the previous year to show a milking animal.\*\*

## Other Important Information

1. **Herdsmen Contest** – A \$5.00 premium, donated by the Erie County Fair, will be awarded to exhibitors selected as the outstanding herdsman in each of the Jr. Livestock Shows. The general public will conduct judging on a daily Herdsman Checklist. The awards will be based on the interest the exhibitors have taken in making and keeping the barn neat and attractive throughout the week without major assistance from parents and other adults. Points are awarded for general appearance and educational presentation of the project(s) in the stall, animal care, exhibitor's attitude and time spent near animal(s).
2. **Goat Dressing Contest** – Contestants should dress their goat in a costume that is non-harmful to the goat. Contestants are encouraged to dress in accordance with the goat's costume. There will be two age groups.
3. **Goat Pack Class** – An event where the 4-H member will be judged on their ability to put a pack properly on their goat, the goat's ability to carry the pack, the contents of the pack, and the exhibitors pack (vest) and its contents. The judge will look for specific items in each of the packs. The class time is not timed.

8. **General Livestock Judging Contest:** Points will be awarded for exhibitors participation in the General Livestock Judging Contest for each species exhibited – total possible points: Beef, Sheep, Swine, Meat Goats – 100 points; 100 points for blue, 75 points for red, 50 points for white.
9. The total number of points accumulated in the eight above categories will be calculated. The exhibitor with the greatest point total in each separate species will be designated the Jr. Department Project Champion for the respective species. The Project Champion will sell his or her market animal immediately following the sale of the Commended Market Animal. In the event of a tie, the winner will be determined on the basis of the exhibitor with the most points scored in category 1. The tie breaking procedure will continue with each subsequent category, in numerical order, until the tie is broken and a winner is determined.

## STATE FAIR

1. All 4-H members are eligible to participate at State Fair providing they have participated with livestock at the Erie County Fair Youth Livestock Shows.
2. Livestock Requirements: a.) all animals must carry positive identification (tattoo, ear tag or ear notch) and it **MUST** be recorded in the 4-H Office. b.) a feed record must be kept on all market animals that will be exhibited at State Fair. These feed records must be up to date and accurate and presented to the 4-H Livestock Educator along with the State Fair entry. All breeding animals must have production, maintenance and breeding records. These must also be presented to the 4-H Livestock Educator along with your entry.
3. All 4-H members must be accompanied by an adult while at State Fair.
4. Members must stay in the NY State Fair dorms and must follow all dormitory rules and regulations. Any member *not staying* in the dorm must have a waiver signed by a parent sent to the 4-H Office.
5. There are camping sites available upon request. An adult in the campsite must accompany all 4-H members

## 2009 Erie County 4-H Market Animal Show Rules

### (Beef, Sheep, Swine, Meat Goat)

The following rules will apply to all four species of market animals (Beef, Sheep, Swine and Meat Goat). Any individual wishing to participate in the 2009 Jr. Department Market Animal Show's must abide by all of the following rules:

1. To be eligible to show, 4-H'ers who participated in the Erie County 4-H program in 2008 must have submitted a 4-H Enrollment no later than February 1, 2009. New participants must submit a 4-H Enrollment by May 1, 2009.
2. All market animal participants must have presented a Public Presentation prior to August 1, 2009 to be eligible to show.
3. Each 4-H member may tattoo/tag a total of 2 market steers, 2 market lambs and 3 market pigs. \*Additional animals designated for State Fair must be tattooed by a veterinarian at the members expense and the numbers need to be reported to the Erie County 4-H Office.
4. There is a limit of one animal per species, per exhibitor that can be shown at America's Fair. For example, an exhibitor may enter one steer, one pig, one lamb and one meat goat. An exhibitor *may not* enter 2 or more steers, 2 or more pigs, 2 or more lambs or 2 or more meat goats. However, may be limited to only selling 2 animals depending on processor availability in 2009.
5. All eligible animals must be sold at America's Fair. A 5% commission will be withheld from the exhibitor's checks to defray sale and trucking expenses, species check off requirements will also be deducted.
6. All market animals will be weighed at the Fair. All animals will be weighed one time only. Only one animal per species per 4-H'er will be weighed. No substitutions will be allowed. The weight brackets are as follows: **Beef – min 1,000 lbs. (no max weight); Sheep – min 90 lbs. (no max weight); Swine – min 210 lbs. – max 270 lbs.; Meat Goat—min. 50 lbs.( no max weight)**

All overweight and underweight market animals must be removed from the fairgrounds immediately.

7. All exhibitors are required to participate in Public Presentations. Points awarded are: 100 for a blue, 80 for a red, and 60 for a white. Each member **MUST** participate in Public Presentations in the spring. Presentation topics may be of your choice. Exhibitors that do not give a Public Presentation prior to August 1, 2009 will be ineligible to participate in the 2008 Erie County 4-H Livestock program. There will be no presentations given at the fair in 2009.
8. The total number of points accumulated in the six above categories will be calculated. The exhibitor with the greatest point total in each separate species will be designated the Jr. Department Goat Project Champion. In the event of a tie, the winner will be determined on the basis of the exhibitor with the most points scored in category 1. The tie breaking procedure will continue with each subsequent category, in numerical order, until the tie is broken.



## Goat Project Champion Rules

1. Project records must be kept for each animal that you are exhibiting. Record forms are available in the 4-H office. The record book is required to be complete and accurate and turned in at the fair. Each record will be judged in its completeness and accuracy and will receive 200 points as deemed appropriate by the Advisory Committee.
2. Each member will be required to choose one (1) animal to use as his or her Project Animal. Exhibitors must submit to the 4-H office their choice by August 12, 2008.
3. Attendance at 2 meetings is required. One meeting must be species specific. The other meeting can be species specific or generic (designed to include all species). The type of meeting, the date, time, and location will be announced in the **4-H News**. Exhibitors will receive 150 points for each mandatory meeting attended and 50 points for each meeting attended in excess of the 2 required meetings.
4. All exhibitors must participate in the showmanship contest for the species that they are raising. **Showmanship participants will receive 300 points for a blue ribbon, 200 for a red and 100 points for a white. Each ribbon color will be reduced by 5 points per placing in each category.** (Example: 3<sup>rd</sup> place blue will receive 290 points). Members who were previously designated a Master showman will be considered to have earned a blue ribbon and will be awarded 300 points for their participation the Master Showmanship Class.
5. All exhibitors **MUST** show their animal in its respective breed class. Points will be awarded as follows: 200 points for a blue, 100 points for a red and 50 points for a white. Each ribbon color will be reduced by 5 points within the category.
6. There will be a Knowledge Contest at the fair. Participation is mandatory for all exhibitors. Failure to participate will result in the animal being judged “no award”, meaning that any awards achieved prior to that point will be rescinded and the animal sent home. The Knowledge contest is worth 100 points.

7. Exhibitors must be present and show their market animal in the respective market class, exhibitor’s respective showmanship class and must also be present to sell their market animal in the respective market auction (unless excused by the Livestock Advisory Committee). Failure to be present will result in the exhibitor forfeiting his or her right to sell their project animal at the respective 2010 4-H Market Auction.

8 While at the Fair, all fitting should only be done by the 4-H exhibitor who owns the project animal or with the assistance of another Erie County 4-H Project Exhibitor. This is to include all fitting and grooming done for any contest or show in which the animal participates. Exceptions will only be made for first time Erie County 4-H Program Exhibitors and at the discretion of the Advisory Committee.

9. All market animal classes will be judged on market quality at the time of show. The Danish system will be used. Animals judged “No Award” will not be eligible for the America’s Fair 4-H auction and must be removed from the fairgrounds immediately.

10. All animals must meet the Health Requirements of the New York State Department of Agriculture and Markets and be accompanied by a Health Certificate. All cattle must have a negative BVD test.

11. All animals must be fed, watered, and freshly bedded by 10:00 a.m. each day

12. All 4-H participants are expected to follow the 4-H Code of Conduct and present themselves in a positive manner at all times.

Failure to abide by the rules stated in this Handbook and America’s Fair Premium Book may result in the loss of privileges (such as selling your market animal in the 4-H sale, premiums, or exhibiting at America’s Fair in the future) as decided by the 4-H Personnel, the Advisory Committee and the America’s Fair Personnel.

## 2009 Erie County 4-H - General Information

1. **Herdsmen Contest** – A \$5.00 premium, donated by America's Fair, will be awarded to exhibitors selected as outstanding herdsmen in each of the Jr. Market Shows. The judging will be conducted on a daily basis with judging done by advisory committee members of a different species. The awards will be based on the interest the exhibitors have taken in making and keeping the barn neat and attractive throughout the week without major assistance from parents or other adults. Points are awarded for general appearance and educational presentation of the project(s) in the stall, animal care, exhibitor's attitude and time spent near animal(s). *This does not apply to Poultry or Rabbits.*
2. **Sheep Leadline Class** – The competition is open to both breeding sheep and market lamb exhibitors. Prizes useful in sheep raising will be awarded. The rules for the class are as follows:
  - Contestants must be attired in some apparel made of wool (5 extra points will be awarded to contestants who make their own apparel of wool). Apparel must be different from the previous year.
  - Sheep or lambs must be brought into the show ring and shown on a halter with leadline. Animals must be properly fit and clean
  - Contestants will be judged on poise of exhibitor, appearance of exhibitor, quality of animal and behavior of animal on lead.
  - Contestants will be divided into a Senior Division (16-19 years), Intermediate Division (13-15 years) and a Junior Division (8-12 years).
4. **Sheep and Swine New York Bred, Born and Raised Class**—Open to all exhibitors that are showing an animal that was bred and born in New York State. Animals will be judged on market quality. A copy of your receipt must have been presented at the time of tattooing and you must sign up for this class on your fair entry form.

## GOATS

### Goat Exhibitor Rules

1. All animals exhibited must be owned OR leased through the Erie County 4-H Dairy Goat Lease Program in the name of and cared for by the exhibitor since May 1, 2009.
2. Goats may be purebred, recorded grade or miniature
3. Only doe and wether goats are acceptable. No bucks of *any age* will be allowed. This means that all kids that are at the does side need to be castrated.
4. Goats with horns are not permitted to show. (*Dairy goat program only*)
5. Goats must be personally owned and registered by the 4-H exhibitor as well as cared for by the exhibitor no later than May 1 of the current year. Dual ownership or syndicates are not allowed.
6. Each exhibitor may show any number of owned dairy goats. No exhibitor may enter more than 2 animals in any one class. Exhibitors must be present and show their respective goat in all necessary classes.
7. All goats (registered or not) must meet the specific breed standards for that breed.
8. All miniature breeds must be 26" or less at the shoulder.
9. Each exhibitor may exhibit only 2 wether goats.
10. Exhibitors who exhibit wether goats MUST participate in at least one (1) working goat class.
11. Exhibitors approved dress will be a white shirt and black pants. Pants must be dark black (new) and may not be faded. Farm names and letters should not appear on clothing. Premiums will be withheld for non-compliance.
12. All exhibitors must keep a Goat Record Book and present it completed at the fair.

7. Participation in the Dairy Judging Contest is strongly encouraged. Points awarded for the contest are 200 for a blue, 100 for a red, and 50 for a white.
8. Participation in the Dairy Bowl is strongly encouraged. Points awarded for the contest are 100 for top score individual and places decrease by 5 for each individual placing.
9. All exhibitors are required to participate in Public Presentations. Points awarded are: 100 for a blue, 80 for a red, and 60 for a white. Each member **MUST** participate in Public Presentations in the spring. Presentation topics may be of your choice. Exhibitors that do not give a Public Presentation prior to August 1, 2009 will be ineligible to participate in the 2009 Erie County 4-H Livestock program. There will be no presentations given at the fair in 2009.
10. The total number of points accumulated in the eight above categories will be calculated. The exhibitor with the greatest point total in each separate species will be designated the Jr. Department Dairy Project Champion. In the event of a tie, the winner will be determined on the basis of the exhibitor with the most points scored in category 1. The tie breaking procedure will continue with each subsequent category, in numerical order, until the tie is broken.

## Beef Cattle

### Specific Rules for Market Steer Exhibitors

1. All steers must be of 100% beef breeding and must have been born after January 1, 2008. Steers must have been owned, castrated, and cared for by the exhibitor since January 1, 2009.
2. Only steers are eligible for the market show. No heifers, bulls or stags are allowed.
3. Steers, who through behavior or any other cause, cannot be led with no restraints, other than a halter, to the scale at the designated weigh-in time or show ring on show day, cannot be shown and will receive "No Award" and must be removed from the Fairgrounds immediately. This rule has been established for numerous reasons including, but not limited to, concern for the safety of the exhibitor and the general public.
4. All exhibitors **MUST** be able to handle their steer on a halter. Failure to do so may prohibit you from exhibiting at the fair in 2009.
5. All steers must be completely dehorned and healed when exhibited. Animals with scurs are not eligible to show.

How to tell if your steer has scurs:

Is it loose or moveable?      If Yes, it is a scur. If it is more than 1" long, it must be removed.      If No, it is a horn and must be removed.

5. Exhibitors who are found to break the market animal show rule #8 on page 9 will receive the following reprimand: *Animals owned by Exhibitors who are found to have violated this rule will not be eligible for a blue ribbon in any contest for show in which the animal is entered. As a result of not receiving a blue ribbon, the animal will not be eligible to compete for the Grand Championship, Reserve Grand Championship, Highly Commended and/or the Commended awards.*
6. All Market Steers will be weighed upon their arrival to the fair between the hours of 7-8:00 a.m. on Tuesday, August 18, 2009.
7. Participants in the Market Steer program must be 9 years old as of January 1, 2009

## Specific Rules for Beef Breeding Cattle Exhibitors

1. Registered purebred heifers only of 100% beef breeding OR non-registered heifers. Heifers must be from purebred beef or crossbred beef parents. Animals of dairy or part dairy breeding are not eligible.
2. All heifers exhibited must be owned and cared for since May 1, 2009. Papers will be checked.
3. All heifers must be de-horned.
4. All exhibitors must have up-to-date and complete records (i.e. production, breeding, and maintenance records) on all heifers, cows and calves to be exhibited. These records must be ready to be handed in and checked at the Fair. Record books are available at the 4-H Office.
5. All calves shown in individual classes must be at least 4 months old at time of show.
6. Participants in the beef breeding project must be at least 8 years old as of January 1, 2009.

### Beef Fitting & Showmanship Contests

Each contestant must show their own animal, but during the course of the contest may be asked by the judge to show some other animal.

The judges, in making the awards, shall consider the following:

Preparation of the animal for showing:

1. Condition of feet & trimming of toes
2. Clipping of the head, ears, tail, etc.
3. Cleanliness and condition of the hide and hair

Showing the animal:

1. Control of the animal by the exhibitor
2. Poise and coolness of the exhibitor
3. Knowledge of the animal and the industry.
4. Skill in showing the animal to best advantage

## Dairy Project Champion Rules

1. Project records must be kept for each animal that you are exhibiting. Record forms are available in the 4-H office. The record book is required to be complete and accurate and turned in at the fair. Each record will be judged in its completeness and accuracy and will receive 200 points as deemed appropriate by the Advisory Committee.
2. Each member will be required to choose one (1) animal to use as his or her Project Animal. Exhibitors must submit to the 4-H office their choice by August 12, 2009 at 10:00 a.m..
3. Attendance at 2 meetings is required. One meeting must be species specific. The other meeting can be species specific or generic (designed to include all species). The type of meeting, the date, time, and location will be announced in the **4-H News**. Exhibitors will receive 150 points for each mandatory meeting attended and 50 points for each meeting attended in excess of the 2 required meetings. *Club meetings do not count as a mandatory meeting.*
4. All exhibitors must participate in the showmanship contest for the species that they are raising. **Showmanship participants will receive 300 points for a blue ribbon, 200 for a red and 100 points for a white. Each ribbon color will be reduced by 5 points per placing in each category.** (Example: 3<sup>rd</sup> place blue will receive 290 points). Members who were previously designated a Master showman will be considered to have earned a blue ribbon and will be awarded 300 points for their participation in the Master Showmanship Class.
5. All exhibitors MUST show their animal in its respective breed class. Points will be awarded as follows: 200 points for a blue, 100 points for a red and 50 points for a white. Each ribbon color will be reduced by 5 points within the category.
6. There will be a Knowledge Contest that will take place during the project months. Participation is mandatory for all exhibitors. Failure to participate will result in the animal being judged “no award”, meaning that any awards achieved prior to that point will be rescinded and the animal sent home. The Knowledge contest is worth 100 points.

## Fitting & Showmanship Contests

Each contestant must show his own animal, but during the course of the contest may be asked by the judge to show some other animal. Members must prepare their animal for the showmanship contest without **major assistance** of parents or other adults.

Appearance of animal		30 points
1. Condition, Thriftiness	10	
2. Grooming	10	
3. Clipping	5	
4. Cleanliness	5	

Appearance of Exhibitor		10 points
Light colored outfits are acceptable		

Showing Animal In Ring		60 points
1. Leading	25	
2. Posing	15	
3. Show Animal to Best Advantage	10	
4. Poise, Alertness & Attitude	10	
TOTAL		100 points

## Mandatory Procedures Checklist

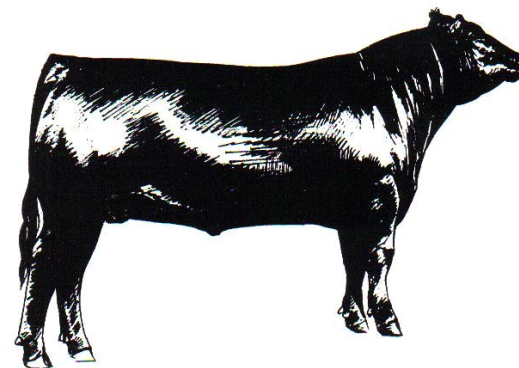
### For Dairy Exhibitors

- Submit a 4-H Enrollment by February 1, 2009 (new members have until May 1, 2009).
- Grade Cattle ID Certificate and photo on file in the 4-H office by June 1, 2009.
- Complete monthly feed records.
- Cattle must have a negative BVD test.
- Attend 2 meetings with at least 1 being species specific.
- Erie County Fair 4-H Entry form for Dairy must be submitted to the 4-H Office by July 13, 2009.
- Complete a Public Presentation—in the Spring
- Show in Dairy Showmanship – at the Fair
- Show your dairy animal in it's respective breed class
- HAVE FUN!!!

## Mandatory Procedures Checklist

### For Beef Exhibitors

- All cattle must have a negative BVD test result.
- All market steers must have been tagged/tattooed in January 2009 by the 4-H Program.
- Submit a 4-H enrollment due January 1, 2009 for all beef members.
- Bi-Monthly project records – starting in January 2009
- Attend at least 2 meetings (1 specifically for beef exhibitors and the other can be generic or beef specific)
- America's Fair Entry form for Beef must be submitted to the 4-H Office by Monday, July 13, 2009.
- Complete a Public Presentation—In the spring.
- Participate in the Beef Knowledge Contest – through course of project thru feed records.
- Show in Beef Cattle Showmanship – At the Fair
- Show in the Beef Market Class – At the Fair
- Sell your steer in the 4-H Beef Auction – At the Fair
- HAVE FUN!!!



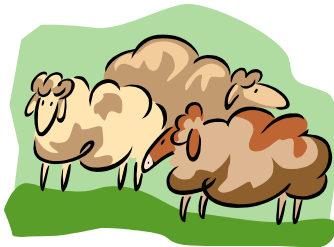
## Sheep

### Specific Rules for Market Lamb Exhibitors

1. Lambs may be purebred or crossbred. Only wether or ewe lambs are acceptable. Lambs must be born after January 1, 2009
2. Lambs must be owned and cared for by the exhibitor by May 1, 2008
3. All animals must be shorn prior to the Fair and shown in short fleece (maximum fleece length of ¼" on entire body) All animals must have docked tails.

### Specific Rules for Breeding Sheep Exhibitors

1. All sheep in this section must be purebred and registered in the exhibitor's name by May 1, 2009
2. Limit of 2 animals per class and 10 animals total
3. All sheep must be properly washed and fit in order to be shown. The sheep advisory committee will have the final decision on any questionable animals not meeting these criteria.
4. All exhibitors must have up-to-date and complete records (i.e. production, breeding, and maintenance records) on all breeding animals exhibited to be handed in and checked at the Fair. Records are available at the 4-H Office.
5. A copy of all registration papers must be sent to the 4-H office along with the June feed records.
6. All breeding sheep exhibitors must participate in Breeding Sheep Showmanship
7. Participants in the sheep breeding project must be 8 years old as of January 1, 2009.



## Other Important Information

1. **Herdsman Contest** – A \$5.00 premium, donated by America's Fair, will be awarded to exhibitors selected as outstanding herdsman in each of the Jr. Department Shows. The judging will be conducted on a daily basis with judging done by advisory committee members of a different species. The awards will be based on the interest the exhibitors have taken in making and keeping the barn neat and attractive throughout the week without major assistance from parents or other adults. Points are awarded for general appearance and educational presentation of the project(s) in the stall, animal care, exhibitor's attitude and time spent near animal(s).
2. **Dairy Dressing Contest** – Contestants should dress their dairy animal in a costume that is non-harmful to the animal. Contestants are encouraged to dress in accordance with the animal's costume. There will be two age groups.
3. **Dairy Knowledge Contest** – A contest designed to encourage young people to learn more about their projects. In 2009 monthly sheets will contain questions that must be turned in by the due by date. All questions will be graded and that total score will be used for the knowledge contest portion of the Project Champion program.
4. **All animals** must be properly washed and fit in order to be shown. The advisory committee will have the final decision on any questionable animals not meeting these criteria. The animal must be maintained throughout the fair or premiums may be forfeited.
5. **All animals** while on display, **must** be properly bedded and kept clean. Failure to do so will prohibit members from showing the following year.



## Dairy Cattle

### Dairy Cattle Rules

1. All animals must be owned OR leased through the Erie County 4-H Dairy Lease program, registered or certified as an identifiable grade, in the name of and cared for by the exhibitor since June 1, 2009. Dairy Animals must have an ear tag or tattoo number.
  - 1a. All grade cattle must have a Grade Certificate and photo on file in the 4-H office by June 1, 2009.
  - 1b. Grade cattle are not eligible to compete at the New York State Fair.
1. An animal born on November 30, 2008 or earlier has to be dehorned in order to be eligible to show at America's Fair. This rule has been established for reasons including, but not limited to, concern for the safety of the exhibitors and the general public.
2. No bulls or bull calves will be shown in the Jr. Department.
3. All animals must meet the health requirement as set by the New York State Department of Agriculture and Markets.
4. All animals must have a negative BVD test.
5. Participants must be 8 years old as of January 1, 2009.

### Dairy Cattle Leasing Program Rules

1. An exhibitor may lease up to 2 animals provided that they do not already own a dairy animal.
2. *Year 1 of the Leasing Program* – A 4-H member may lease only 1 animal. The animal may be a Jr. Heifer to a Summer Yearling

*Year 2 of the Leasing Program* – A 4-H member may lease only 1 or 2 animals, one being from the year before (that may be in milk) and the second heifer that is not in milk and is no older than a Summer Yearling.

*Year 3 of the Leasing Program* – A 4-H member may show 2 milking animals, provided that the animal has been in the program the previous year.



*Program* – A 4-H member may show 2 milking animals, provided that the animal has been in the program the previous year to show a milking animal.

## Other Important Information

1. **Sheep Dressing Contest** – Contestants should dress their sheep and themselves in a costume that is not harmful to the sheep. There will be three age groups. Extra points will be awarded if the fair theme is used.

### Sheep Leasing Program

1. Exhibitors may lease 1 registered breeding ewe provided they do not already own a registered ewe. No rams will be allowed.
2. Lease agreement papers must be in the 4-H Office by May 1, 2009. A copy of the registration paper must be attached.
3. Lease participants **must** participate in Breeding Sheep Showmanship and the Breed Show.
4. All leased animals must be properly fit for show.

### Mandatory Procedures Checklist For Sheep Exhibitors

- Submit a 4-H Enrollment – due February 1, 2009 (new members have until May 1, 2009).
- Monthly project records – starting in May 2009
- Attend at least 2 meetings (1 specifically for sheep exhibitors and the other can be generic or sheep specific)
- Have your lamb(s) tattooed on Sunday, May 3, 2009
- America's Fair Entry form for Sheep must be submitted to the 4-H Office by Monday, July 13, 2009
- Complete a Public Presentation—in the Spring
- Complete the Sheep Knowledge Contest – through course of project thru feed records.
- Show in Sheep Showmanship – At the Fair
- Show in the Lamb Market Class – At the Fair
- Show in the Purebred Sheep Classes—At the Fair
- Sell your lamb in the 4-H Lamb Auction – At the Fair
- HAVE FUN!!!

## Swine

### Specific Rules for Market Swine Exhibitors

1. Swine may be barrows or gilts. Boars are strictly forbidden. If at anytime an entered swine is found to be a boar or possessing boar characteristics (including that of a boar smell), up to and including the time of slaughter (as applicable), the participant entering the boar swine will be requested to remove the hog from the fair grounds. In those cases where the pig is discovered to be a boar after it has been sold and slaughtered, the participant will forfeit the sale price of the swine by returning the purchase price in full to the buyer of said swine.
  - 1a. If at any time an entered swine is found to be a boar before the sale, the entered swine **MUST** be removed from the fairgrounds immediately.
2. Pigs must have been born after January 1, 2009. Animals must have been owned and cared for by the exhibitor since May 1, 2009.
3. Swine ID paperwork must be in the 4-H office by May 8, 2009 at 4:30 p.m. to be eligible to show.
4. All pigs must be bathed and exercised by 10:00 a.m. Under a committee member's supervision pigs may also be bathed and exercised between 8:30 p.m. and 10:30 p.m. Permission must be granted before any swine move about the barn!
5. All hogs must be cleaned on a regular basis. Failure to do so many result in your animal being sent home at the discretion of the Swine Advisory Committee. All exhibitors will be given 3 warnings to make exhibit pens acceptable. Exhibitors failing to abide by a committee persons request after 3 attempts will be asked to remove their project from the fair.
6. Exhibitors will be allowed to have squirt bottles of water in chutes while waiting to show. This rule has been established for the welfare of the animals.
7. There will be buckets of water at the side of the chutes to be used for the watering of animals only, if needed, while in the chute.
8. There is no water allowed in the show ring.

### Other Important Information

**Swine Dressing Contest** – Contestants should dress their swine in a costume that is non-harmful to the animal. Contestants are encouraged to dress in accordance with the swine's costume. There will be three age groups. All judging will take place in the swine pen in the barn.

## Swine Fitting & Showmanship Contest

Each contestant must show their own animal. The judge, in making the awards, shall consider the following points:

Fitting & General Appearance of Animal	30 points
Proper condition of the Swine with respect	
1. To amount of finish	10
2. Clipping of ears and tail	10
3. Cleanliness of skin, hair & overall bloom	10
Appearance of Exhibitor	10 points
Performance of Animal & Showman in the Ring	60 points
1. Control of animal	30
2. Show Animal to Best Advantage	15
3. Attitude of showman to include calm, confident manner, work in partnership with animal, courteousness to other showmen and knowledge of the project	15
<b>TOTAL</b>	<b>100 points</b>

### Mandatory Procedures Checklist For Swine Exhibitors

- Submit a 4-H Enrollment – due February 1, 2009 (new members have until May 1, 2009).
- Monthly project records – starting in May 2009
- Attend at least 2 meetings (1 specifically for swine exhibitors and the other can be generic or swine specific)
- Have your Market Swine tattooed on or before May 3, 2009 and submit ID paperwork to the 4-H office by May 8, 2009 at 4:30 p.m.
- America's Fair Entry form for Swine must be submitted to the 4-H Office by Monday, July 13, 2009
- Complete a Public Presentation—in the Spring
- Complete the Swine Knowledge Contest – Show in the Swine Market Class – through course of project thru feed records.
- Show in Swine Market Class—At the Fair.
- Show in Swine Showmanship—At the Fair
- Sell your pig in the 4-H Swine Auction – At the Fair
- HAVE FUN!!!**