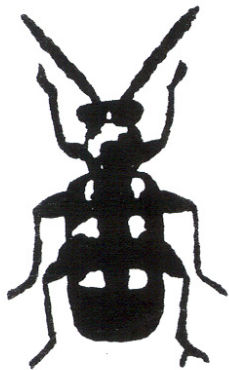


## Asparagus Beetle

There are two species of beetles that attack and cause economic damage to asparagus in New York. They are the common asparagus beetle, *Crioceris asparagi* (Linnaeus), and the spotted asparagus beetle, *Crioceris duodecimpunctata* (Linnaeus). The common asparagus beetle is the more widespread of the two species.

### Common Asparagus Beetle



Common  
asparagus  
beetle (x 5)

**Description.** The common asparagus beetle is ¼ inch in length, has a bluish black head, legs and antennae tinged with green, reddish thorax and the wing covers are marked by yellowish patches and reddish borders.

The larva or grub of this beetle is dark gray to olive green with black legs and head.

**Injury.** Both the larvae and the adults of the common asparagus beetle damage the asparagus plants. The overwintered adults emerge and begin to feed on the tender growing tips of newly sprouted asparagus. They eat holes and cause a brownish discoloration of the tissue. The grubs will feed on the tender young tips and on foliage. The plant growth is seriously reduced and proper root development prevented causing a decrease in the size and quality of the crop.

**Life History.** Adult beetles overwinter in sheltered places such as piles of rubbish and heaps of old asparagus tops. They emerge from their shelter when the new shoots come up and begin feeding on the tender tips. They soon lay eggs on the young shoots. The eggs are elongate, oval, and deposited with either singly or in rows of two to eight. Later in the season the eggs are laid on leaves and flower stems.

The eggs hatch in 3 to 8 days and the grubs begin feeding on the tender tips. When the grubs mature, they drop to the ground and construct a small earthen cell where they transform into pale, yellowish pupae. There may be two or more generations a year depending on the climate.



(x 6)



Spotted asparagus  
beetle (x5)

### Spotted Asparagus Beetle

**Description.** The spotted asparagus beetle is slightly larger and more robust than the common asparagus beetle. The adults are more robust than the common asparagus beetle. The adults are reddish-orange in color with black antennae, eyes and underside of thorax. Each wing cover has six distinct black spots.

**Injury.** This beetle is most injurious in the early season when the adults attack the growing tips and sometimes eat the buds of newly sprouted asparagus. The beetles also feed on foliage, eating out irregular areas. The larvae cause little damage because they feed inside the berries.

*Building Strong and Vibrant New York Communities*

